



Connect



Scan



Plan



Treat



Monitor

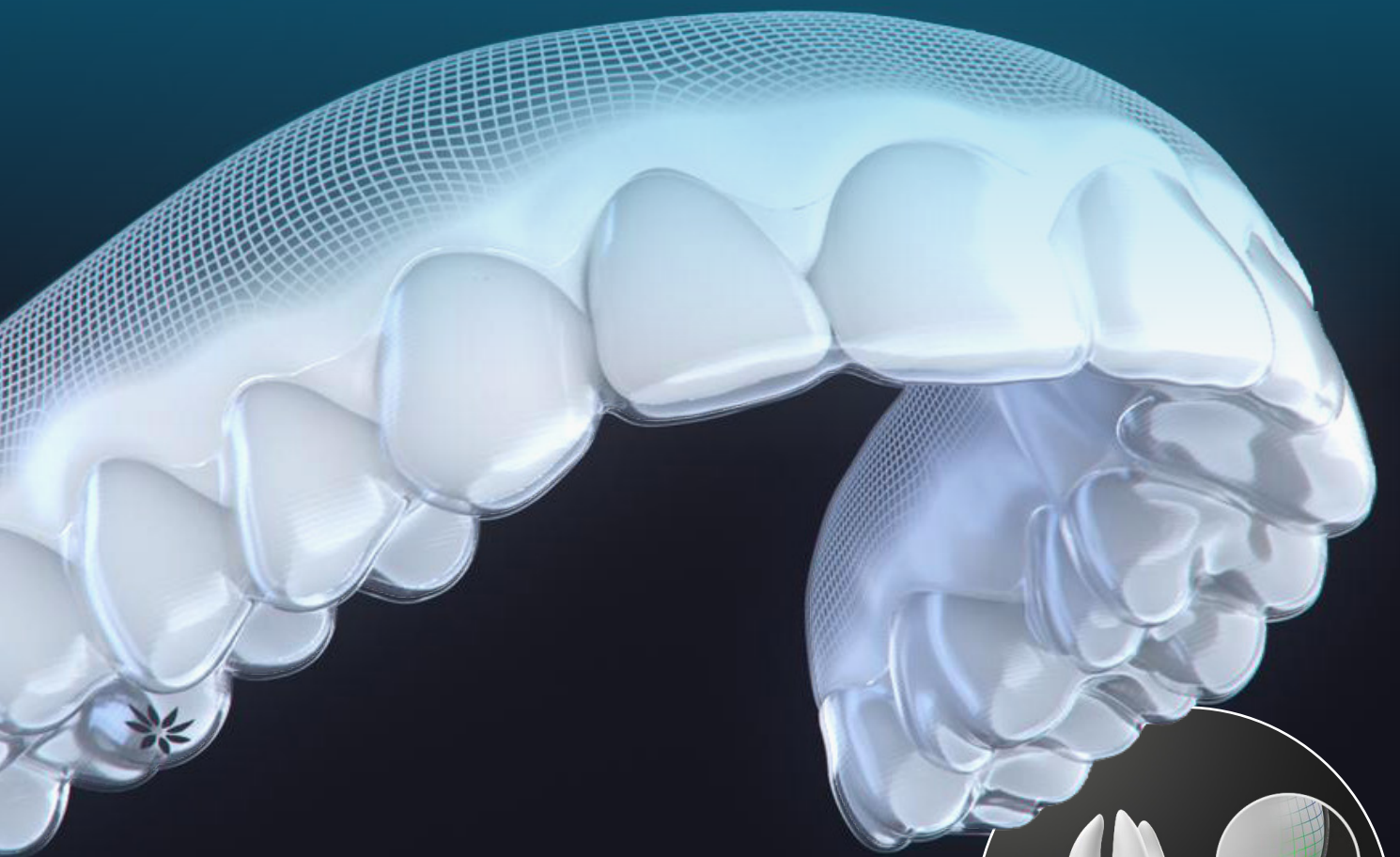


Retain

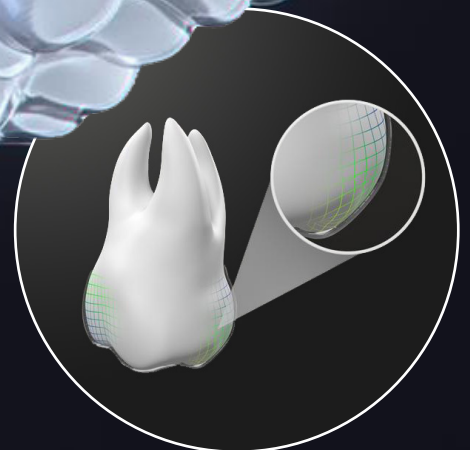
Predictability you can rely on is the key to efficiently delivering the best possible clinical results for you and your patients.

Invisalign® G8 with SmartForce® Aligner Activation

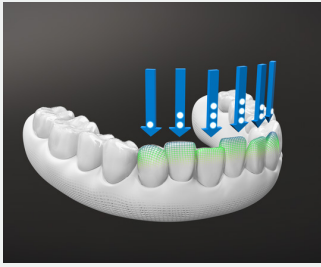
This enhanced combination is designed to further improve predictability, so that you can be even more confident of delivering great clinical outcomes.



With SmartForce Aligner Activation, areas on the aligner surfaces are contoured to apply forces to the tooth in the proper direction to produce the desired movement while minimising unwanted movements.

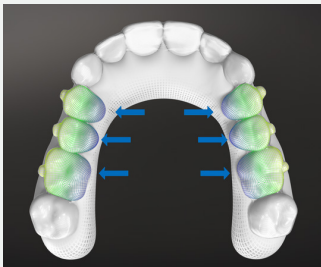


How it works



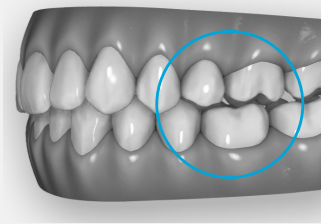
Deep bite correction

- Intrusion force levels are optimised for each tooth.
- Automatic placement of precision bite ramps – clinically proven to improve lower incisor intrusion by up to 30%*



Posterior arch expansion in crowding and cross bite cases:

- Automatically programmed to apply and distribute the required force to each posterior tooth.
- Designed to minimise unwanted molar tipping by automatically applying buccal root torque to the premolars and first molars.



Reduces the likelihood of posterior open bite (POB):

- Provides more predictable anterior intrusion, which may reduce premature anterior contacts
- Controls unwanted buccal crown torque/tip during expansion

The SmartForce features are added to improve the effectiveness of tooth movement, including difficult tooth movements, and to make it possible for doctors to treat complex cases. They appear in your ClinCheck® treatment plan as Optimized Attachments, Power Ridge features, Pressure Points, and Pressure Areas. They are automatically placed by the Treat software in accordance with the desired movement.

Key benefits

- Up to 2x improvement in clinical predictability of incisor intrusion in deep bite cases.**
- Improvements to predictability in moderate/severe crowding and cross bite cases.
- Reduction in the likelihood of posterior open bite.

*Data on file at Align Technology, as of November 15, 2019. **Data on file at Align Technology, as of July 25, 2019.